

On the Log-Brunn-Minkowski conjecture

(based on various joint works with Andrea Colesanti, John Hosle, Alexander Kolesnikov, Arnaud Marsiglietti, Piotr Nayar, Artem Zvavitch.)

Galyna V. Livshyts

Georgia Institute of Technology

BIRS, Banff, Canada
February 2020.

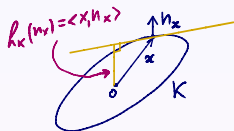
- Convex bodies in \mathbb{R}^n denote K, L, M ;
- Lebesgue volume in \mathbb{R}^n denote $|\cdot|$ or $|\cdot|_n$;
- Recall Minkowski sum of sets $A, B \subset \mathbb{R}^n$:

$$A + B = \{x + y : x \in A, y \in B\}.$$

- Support function of a convex set K is

$$h_K(y) = \sup_{x \in K} \langle x, y \rangle = \|y\|_{K^\circ};$$

- $h_{K+L} = h_K + h_L$;
- Unit normal to ∂K at $x \in \partial K$ denote n_x ;
- $h_K(n_x) = \langle x, n_x \rangle$;
- Second fundamental form of ∂K denote II , mean curvature $H_x = \text{tr}(\text{II})$.



Log-concavity of the Lebesgue measure

$$|\lambda K + (1 - \lambda)L| \geq |K|^\lambda |L|^{1-\lambda}$$

$\frac{1}{n}$ -concavity of the Lebesgue measure

$$|\lambda K + (1 - \lambda)L|^{\frac{1}{n}} \geq \lambda |K|^{\frac{1}{n}} + (1 - \lambda) |L|^{\frac{1}{n}}$$

Log-concavity of the Lebesgue measure

$$|\lambda K + (1 - \lambda)L| \geq |K|^\lambda |L|^{1-\lambda}$$

$\frac{1}{n}$ -concavity of the Lebesgue measure

$$|\lambda K + (1 - \lambda)L|^{\frac{1}{n}} \geq \lambda |K|^{\frac{1}{n}} + (1 - \lambda) |L|^{\frac{1}{n}}$$

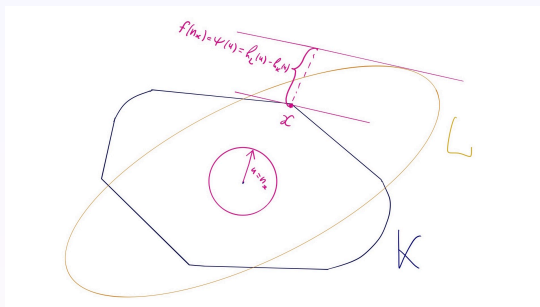
The isoperimetric inequality

For all Borel-measurable sets K with $|K| = |B_2^n|$, one has $|\partial K| \geq |\partial B_2^n|$.

Proof

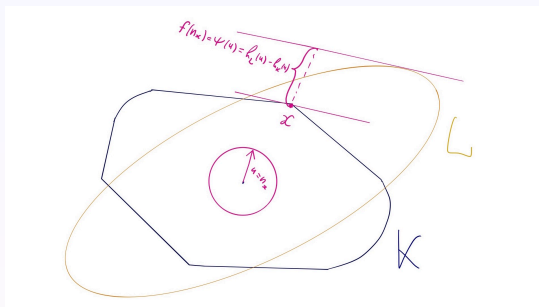
$$|\partial K| = \liminf_{\epsilon \rightarrow 0} \frac{|K + \epsilon B_2^n| - |K|}{\epsilon} \geq \liminf_{\epsilon \rightarrow 0} \frac{\left(|K|^{\frac{1}{n}} + \epsilon |B_2^n|^{\frac{1}{n}}\right)^n - |K|}{\epsilon} = n |K|^{\frac{n-1}{n}} |B_2^n|^{\frac{1}{n}}.$$

The local version of the Brunn-Minkowski inequality



- Fix convex sets K and L with support functions h_K and h_L ;
- Let $\psi : \mathbb{S}^{n-1} \rightarrow \mathbb{R}$ be given by $\psi(u) = h_L(u) - h_K(u)$;
- For $t \in [0, 1]$, the body $K_t = (1-t)K + tL$ has support function $h_t = h_K + t\psi$ on \mathbb{S}^{n-1} ;

The local version of the Brunn-Minkowski inequality



- Fix convex sets K and L with support functions h_K and h_L ;
- Let $\psi : \mathbb{S}^{n-1} \rightarrow \mathbb{R}$ be given by $\psi(u) = h_L(u) - h_K(u)$;
- For $t \in [0, 1]$, the body $K_t = (1-t)K + tL$ has support function $h_t = h_K + t\psi$ on \mathbb{S}^{n-1} ;
- The Brunn-Minkowski inequality

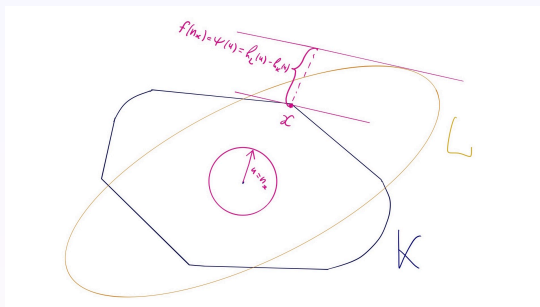
$$|\lambda K + (1-\lambda)L| \geq |K|^\lambda |L|^{1-\lambda}$$

implies that $\log |K_t|$ is concave;

- Let $F(t) = |K_t|$. We deduce $(\log F)''_{t=0} \leq 0$, or

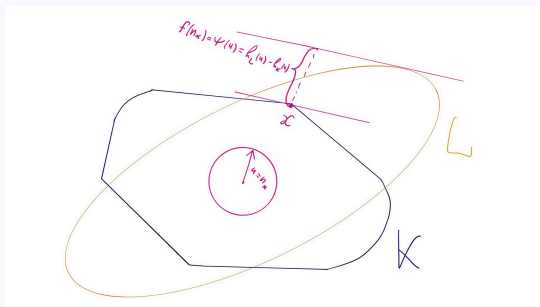
$$F''(0)F(0) - F'(0)^2 \leq 0.$$

The local version of the Brunn-Minkowski inequality



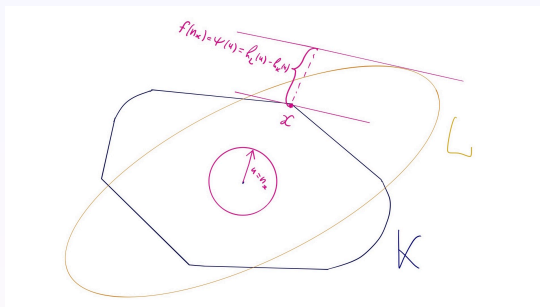
- $F(t) = |K_t|$, $h_t = h_K + t\psi$, BM implies $F''(0)F(0) - F'(0)^2 \leq 0$.

The local version of the Brunn-Minkowski inequality



- $F(t) = |K_t|$, $h_t = h_K + t\psi$, BM implies $F''(0)F(0) - F'(0)^2 \leq 0$.
- Let $f : \partial K \rightarrow \mathbb{R}$ be given by $f(x) = \psi(n_x) = h_L(n_x) - h_K(n_x)$;
- $F(0) = |K|$;
- $F'(0) = \int_{\partial K} f$;
- $F''(0) = \int_{\partial K} H_x f^2 - \langle \Pi^{-1} \nabla_{\partial K} f, \nabla_{\partial K} f \rangle$;

The local version of the Brunn-Minkowski inequality



- $F(t) = |K_t|$, $h_t = h_K + t\psi$, BM implies $F''(0)F(0) - F'(0)^2 \leq 0$.
- Let $f : \partial K \rightarrow \mathbb{R}$ be given by $f(x) = \psi(n_x) = h_L(n_x) - h_K(n_x)$;
- $F(0) = |K|$;
- $F'(0) = \int_{\partial K} f$;
- $F''(0) = \int_{\partial K} H_x f^2 - \langle \Pi^{-1} \nabla_{\partial K} f, \nabla_{\partial K} f \rangle$;
- Brunn-Minkowski inequality implies, and follows from

$$\int_{\partial K} H_x f^2 - \langle \Pi^{-1} \nabla_{\partial K} f, \nabla_{\partial K} f \rangle - \frac{(\int_{\partial K} f)^2}{|K|} \leq 0.$$

(Colesanti 2008; Kolesnikov-Milman 2015-2018)

Abstract observation

- Take any algebra A which is a vector space over \mathbb{R} ;
- Let $Q : A \times A \rightarrow \mathbb{R}$ be any symmetric bilinear form;
- Suppose for every $a \in A$,

$$Q(a, a) \leq 0. \tag{1}$$

- Take any algebra A which is a vector space over \mathbb{R} ;
- Let $Q : A \times A \rightarrow \mathbb{R}$ be any symmetric bilinear form;
- Suppose for every $a \in A$,

$$Q(a, a) \leq 0. \tag{1}$$

- Fix any element $z \in A$;
- For all $t \in \mathbb{R}$ we have $Q(a + tz, a + tz) \leq 0$, or equivalently

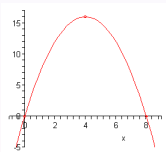
$$Q(a, a) + 2tQ(a, z) + t^2Q(z, z) \leq 0;$$

- Take any algebra A which is a vector space over \mathbb{R} ;
- Let $Q : A \times A \rightarrow \mathbb{R}$ be any symmetric bilinear form;
- Suppose for every $a \in A$,

$$Q(a, a) \leq 0. \quad (1)$$

- Fix any element $z \in A$;
- For all $t \in \mathbb{R}$ we have $Q(a + tz, a + tz) \leq 0$, or equivalently

$$Q(a, a) + 2tQ(a, z) + t^2Q(z, z) \leq 0;$$



- Optimize in t , plug optimal $t = -\frac{Q(a, z)}{Q(z, z)}$, get the Schwartz inequality

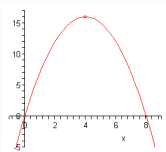
$$Q(a, a) \leq \frac{Q(a, z)^2}{Q(z, z)} \leq 0 \quad (2)$$

- Take any algebra A which is a vector space over \mathbb{R} ;
- Let $Q : A \times A \rightarrow \mathbb{R}$ be any symmetric bilinear form;
- Suppose for every $a \in A$,

$$Q(a, a) \leq 0. \quad (1)$$

- Fix any element $z \in A$;
- For all $t \in \mathbb{R}$ we have $Q(a + tz, a + tz) \leq 0$, or equivalently

$$Q(a, a) + 2tQ(a, z) + t^2Q(z, z) \leq 0;$$



- Optimize in t , plug optimal $t = -\frac{Q(a, z)}{Q(z, z)}$, get the Schwartz inequality

$$Q(a, a) \leq \frac{Q(a, z)^2}{Q(z, z)} \leq 0 \quad (2)$$

- (2) is sharper than (1);
- (2) is invariant under $a \rightarrow a + tz$.

- The local version of the (multiplicative) Brunn-Minkowski inequality:

$$\int_{\partial K} H_x f^2 - \langle \Pi^{-1} \nabla_{\partial K} f, \nabla_{\partial K} f \rangle - \frac{(\int_{\partial K} f)^2}{|K|} \leq 0.$$

- The local version of the (multiplicative) Brunn-Minkowski inequality:

$$\int_{\partial K} H_x f^2 - \langle \Pi^{-1} \nabla_{\partial K} f, \nabla_{\partial K} f \rangle - \frac{(\int_{\partial K} f)^2}{|K|} \leq 0.$$

- Pick the special function $z(x) = \langle x, n_x \rangle (= h_K(n_x))$;

- The local version of the (multiplicative) Brunn-Minkowski inequality:

$$\int_{\partial K} H_x f^2 - \langle \Pi^{-1} \nabla_{\partial K} f, \nabla_{\partial K} f \rangle - \frac{(\int_{\partial K} f)^2}{|K|} \leq 0.$$

- Pick the special function $z(x) = \langle x, n_x \rangle (= h_K(n_x))$;
- Optimize with respect to $f(x) + tz(x)$, using Schwartz inequality get a strengthening

$$\int_{\partial K} H_x f^2 - \langle \Pi^{-1} \nabla_{\partial K} f, \nabla_{\partial K} f \rangle - \frac{n-1}{n} \frac{(\int_{\partial K} f)^2}{|K|} \leq 0.$$

- The local version of the (multiplicative) Brunn-Minkowski inequality:

$$\int_{\partial K} H_x f^2 - \langle \Pi^{-1} \nabla_{\partial K} f, \nabla_{\partial K} f \rangle - \frac{(\int_{\partial K} f)^2}{|K|} \leq 0.$$

- Pick the special function $z(x) = \langle x, n_x \rangle (= h_K(n_x))$;
- Optimize with respect to $f(x) + tz(x)$, using Schwartz inequality get a strengthening

$$\int_{\partial K} H_x f^2 - \langle \Pi^{-1} \nabla_{\partial K} f, \nabla_{\partial K} f \rangle - \frac{n-1}{n} \frac{(\int_{\partial K} f)^2}{|K|} \leq 0.$$

- When $K = B_2^n$, we get the sharp Poincare inequality on \mathbb{S}^{n-1} :

$$\int_{\mathbb{S}^{n-1}} f^2 - \left(\int_{\mathbb{S}^{n-1}} f \right)^2 \leq \frac{1}{n-1} \int_{\mathbb{S}^{n-1}} |\nabla_{\sigma} f|^2,$$

where $\int_{\mathbb{S}^{n-1}}$ is normalized.

- The first eigenvalue of Δ on \mathbb{S}^{n-1} is $\frac{1}{n-1}$, and the above is sharp.

- The Local Brunn-Minkowski inequality

$$\int_{\partial K} H_x f^2 - \langle \Pi^{-1} \nabla_{\partial K} f, \nabla_{\partial K} f \rangle - \frac{n-1}{n} \frac{(\int_{\partial K} f)^2}{|K|} \leq 0$$

is invariant under $f \rightarrow f + t \langle x, n_x \rangle$ ("times change");

- It is also invariant under $f \rightarrow sf$ (dilating);

- The Local Brunn-Minkowski inequality

$$\int_{\partial K} H_x f^2 - \langle \Pi^{-1} \nabla_{\partial K} f, \nabla_{\partial K} f \rangle - \frac{n-1}{n} \frac{(\int_{\partial K} f)^2}{|K|} \leq 0$$

is invariant under $f \rightarrow f + t\langle x, n_x \rangle$ (“times change”);

- It is also invariant under $f \rightarrow sf$ (dilating);
- Recall the definition of mixed volumes of convex bodies K and M , for $k = 1, \dots, n$:

$$V_k(K, M) = \frac{(n-k)!}{n!} |K + tM|_{t=0}^{(k)}$$

- The Local Brunn-Minkowski inequality

$$\int_{\partial K} H_x f^2 - \langle \Pi^{-1} \nabla_{\partial K} f, \nabla_{\partial K} f \rangle - \frac{n-1}{n} \frac{(\int_{\partial K} f)^2}{|K|} \leq 0$$

is invariant under $f \rightarrow f + t \langle x, n_x \rangle$ ("times change");

- It is also invariant under $f \rightarrow sf$ (dilating);
- Recall the definition of mixed volumes of convex bodies K and M , for $k = 1, \dots, n$:

$$V_k(K, M) = \frac{(n-k)!}{n!} |K + tM|_{t=0}^{(k)}$$

- WLOG suppose that $f(x) = h_M(n_x)$ for some convex body M (or else add a large multiple of $h_K(n_x)$). Get Minkowski's quadratic inequality:

$$V_2(K, M) \leq \frac{V_1(K, M)^2}{|K|}$$

- The Local Brunn-Minkowski inequality

$$\int_{\partial K} H_x f^2 - \langle \Pi^{-1} \nabla_{\partial K} f, \nabla_{\partial K} f \rangle - \frac{n-1}{n} \frac{(\int_{\partial K} f)^2}{|K|} \leq 0$$

is invariant under $f \rightarrow f + t \langle x, n_x \rangle$ ("times change");

- It is also invariant under $f \rightarrow sf$ (dilating);
- Recall the definition of mixed volumes of convex bodies K and M , for $k = 1, \dots, n$:

$$V_k(K, M) = \frac{(n-k)!}{n!} |K + tM|_{t=0}^{(k)}$$

- WLOG suppose that $f(x) = h_M(n_x)$ for some convex body M (or else add a large multiple of $h_K(n_x)$). Get Minkowski's quadratic inequality:

$$V_2(K, M) \leq \frac{V_1(K, M)^2}{|K|}.$$

- Upshot: the Minkowski quadratic inequality is equivalent to the Brunn-Minkowski inequality.

- Goal: $\int_{\partial K} H_x f^2 - \langle \Pi^{-1} \nabla_{\partial K} f, \nabla_{\partial K} f \rangle - \frac{n-1}{n} \frac{(\int_{\partial K} f)^2}{|K|} \leq 0$.
- Let $u : K \rightarrow \mathbb{R}$ be any function such that $\langle \nabla u, n_x \rangle = f(x)$ for $x \in \partial K$.
- By divergence theorem, $\int_{\partial K} f = \int_K \Delta u$.

Lemma (Kolesnikov, Milman 2015)

$$\int_{\partial K} H_x f^2 - \langle \Pi^{-1} \nabla_{\partial K} f, \nabla_{\partial K} f \rangle \leq \int_K (\Delta u)^2 - \|\nabla^2 u\|^2.$$

- Goal follows from finding for every $f : \partial K \rightarrow \mathbb{R}$ such $u : K \rightarrow \mathbb{R}$ with $\langle \nabla u, n_x \rangle = f(x)$ and

$$\mathbb{E} \|\nabla^2 u\|^2 \geq \text{Var}(\Delta u) + \frac{1}{n} (\mathbb{E} \Delta u)^2.$$

Solvability of the Neumann system

Let $\Delta u = \text{const}$, with the Neumann boundary condition $\langle \nabla u, n_x \rangle = f(x)$.

- For any symmetric matrix A , $\|A\|_{HS}^2 \geq \frac{\text{tr}(A)^2}{n}$; thus $\|\nabla^2 u\|^2 \geq \frac{1}{n} (\Delta u)^2$.

Logarithmic sum (Definition)

$$\lambda K +_0 (1 - \lambda)L = \bigcap_{u \in \mathbb{S}^{n-1}} \{x \in \mathbb{R}^n : |\langle u, x \rangle| \leq h_K(u)^\lambda h_L(u)^{1-\lambda}\}.$$

Note, by AMGM, $\lambda K +_0 (1 - \lambda)L \subset \lambda K + (1 - \lambda)L$.

Logarithmic sum (Definition)

$$\lambda K +_0 (1 - \lambda)L = \bigcap_{u \in \mathbb{S}^{n-1}} \{x \in \mathbb{R}^n : |\langle u, x \rangle| \leq h_K(u)^\lambda h_L(u)^{1-\lambda}\}.$$

Note, by AMGM, $\lambda K +_0 (1 - \lambda)L \subset \lambda K + (1 - \lambda)L$.

Log-Brunn-Minkowski conjecture (Böröczky, Lutwak, Yang, Zhang 2011)

For **origin-symmetric convex** sets K and L in \mathbb{R}^n ,

$$|\lambda K +_0 (1 - \lambda)L| \geq |K|^\lambda |L|^{1-\lambda}.$$

Logarithmic sum (Definition)

$$\lambda K +_0 (1 - \lambda)L = \bigcap_{u \in \mathbb{S}^{n-1}} \{x \in \mathbb{R}^n : |\langle u, x \rangle| \leq h_K(u)^\lambda h_L(u)^{1-\lambda}\}.$$

Note, by AMGM, $\lambda K +_0 (1 - \lambda)L \subset \lambda K + (1 - \lambda)L$.

Log-Brunn-Minkowski conjecture (Böröczky, Lutwak, Yang, Zhang 2011)

For **origin-symmetric convex** sets K and L in \mathbb{R}^n ,

$$|\lambda K +_0 (1 - \lambda)L| \geq |K|^\lambda |L|^{1-\lambda}.$$

- Equivalent to uniqueness of solution of certain Monge-Ampere equations, questions go back to Firey;
- True for $n = 2$ (Böröczky, Lutwak, Yang, Zhang 2011), (Stancu for polytopes);
- True for unconditional sets (Saraglou 2013, Cordero-Fradelizi-Maurey);
- True for complex convex bodies (Rotem 2017).

The local version of the Log-Brunn-Minkowski inequality

- Fix convex sets K and L with support functions h_K and h_L ;
- Let $\psi : \mathbb{S}^{n-1} \rightarrow \mathbb{R}$ be given by $\psi(u) = \frac{h_L(u)}{h_K(u)}$;
- Locally, $K_t := tK +_0(1-t)L$ has support function

$$h_t = h_K \psi^t = h_K + t\varphi + O(t^2),$$

where $\varphi = h_K \log \frac{h_L}{h_K}$;

- Fix convex sets K and L with support functions h_K and h_L ;
- Let $\psi : \mathbb{S}^{n-1} \rightarrow \mathbb{R}$ be given by $\psi(u) = \frac{h_L(u)}{h_K(u)}$;
- Locally, $K_t := tK +_0 (1-t)L$ has support function

$$h_t = h_K \psi^t = h_K + t\varphi + O(t^2),$$

where $\varphi = h_K \log \frac{h_L}{h_K}$;

- The Log-Brunn-Minkowski inequality implies that $\log |K_t|$ is concave;
- Let $F(t) = |K_t|$. We deduce $(\log F)''_{t=0} \leq 0$, or $F''(0)F(0) - F'(0)^2 \leq 0$.
- Let $f : \partial K \rightarrow \mathbb{R}$ be given by $f(x) = \varphi(n_x) = h_K(n_x) \log \frac{h_L(n_x)}{h_K(n_x)}$;
- $F(0) = |K|$;
- $F'(0) = \int_{\partial K} f$;
- $F''(0) = \int_{\partial K} H_x f^2 - \langle \Pi^{-1} \nabla_{\partial K} f, \nabla_{\partial K} f \rangle + \int_{\partial K} \frac{f^2}{\langle x, n_x \rangle}$.

Theorem (Colesanti, L, Marsiglietti 2016)

The Log-Brunn-Minkowski inequality **would** imply, for every symmetric convex K and every even function $f : \partial K \rightarrow \mathbb{R}$,

$$\int_{\partial K} H_x f^2 - \langle \Pi^{-1} \nabla_{\partial K} f, \nabla_{\partial K} f \rangle + \int_{\partial K} \frac{f^2}{\langle x, n_x \rangle} \leq \frac{(\int_{\partial K} f)^2}{|K|}.$$

Theorem (Colesanti, L, Marsiglietti 2016)

The Log-Brunn-Minkowski inequality **would** imply, for every symmetric convex K and every even function $f : \partial K \rightarrow \mathbb{R}$,

$$\int_{\partial K} H_x f^2 - \langle \Pi^{-1} \nabla_{\partial K} f, \nabla_{\partial K} f \rangle + \int_{\partial K} \frac{f^2}{\langle x, n_x \rangle} \leq \frac{(\int_{\partial K} f)^2}{|K|}.$$

Colesanti-L-Marsiglietti

The local version of the Log-Brunn-Minkowski inequality is true when $K = B_2^n$.

- Indeed, the Local Log-Brunn-Minkowski inequality with $K = B_2^n$ is equivalent to the following Poincare inequality:

$$\text{Var}_{\mathbb{S}^{n-1}}(f) \leq \frac{1}{n} \mathbb{E}_{\mathbb{S}^{n-1}} |\nabla_{\sigma} f|^2,$$

for all **even** functions f , which is known to be true, moreover, with constant $\frac{1}{2n} < \frac{1}{n}$.

Kolesnikov-Milman

The local version of the Log-Brunn-Minkowski inequality is true when $K = B_p^n$, for all $p \in [2, \infty]$.

The local version of the Log-Brunn-Minkowski inequality

Kolesnikov-Milman

The local version of the Log-Brunn-Minkowski inequality is true when $K = B_p^n$, for all $p \in [2, \infty]$.

Chen-Huang-Li-Liu; Putterman

The local version of the Log-Brunn-Minkowski inequality implies the global version of the Log-Brunn-Minkowski inequality!

Kolesnikov-Milman

The local version of the Log-Brunn-Minkowski inequality is true when $K = B_p^n$, for all $p \in [2, \infty]$.

Chen-Huang-Li-Liu; Putterman

The local version of the Log-Brunn-Minkowski inequality implies the global version of the Log-Brunn-Minkowski inequality!

- However, when K is fixed, no global result follows. The global conjecture

$$|\lambda K +_0 (1 - \lambda)L| \geq |K|^\lambda |L|^{1-\lambda}$$

with arbitrary symmetric L is **not known for any K** .

Kolesnikov-Milman

The local version of the Log-Brunn-Minkowski inequality is true when $K = B_p^n$, for all $p \in [2, \infty]$.

Chen-Huang-Li-Liu; Putterman

The local version of the Log-Brunn-Minkowski inequality implies the global version of the Log-Brunn-Minkowski inequality!

- However, when K is fixed, no global result follows. The global conjecture

$$|\lambda K +_0(1-\lambda)L| \geq |K|^\lambda |L|^{1-\lambda}$$

with arbitrary symmetric L is **not known for any K** .

- Could one prove the Local Log BM for some nice “speed function” f , for all K ? (one such answer will come after two slides...)

- (Kolesnikov-Milman) The Local Log BM inequality

$$\int_{\partial K} H_x f^2 - \langle \Pi^{-1} \nabla_{\partial K} f, \nabla_{\partial K} f \rangle + \int_{\partial K} \frac{f^2}{\langle x, n_x \rangle} \leq \frac{(\int_{\partial K} f)^2}{|K|}$$

is invariant under $f \rightarrow f + t \langle x, n_x \rangle$.

- (Putterman) Therefore, it is equivalent to the strengthening of Minkowski's quadratic inequality

$$n(n-1) V_2(K, M) + \int_{\partial K} \frac{h_M^2}{\langle x, n_x \rangle} dH_{n-1}(x) \leq \frac{n^2 V_1(K, M)^2}{|K|}.$$

- Furthermore, the Local (and global) Log BM is invariant under linear transformations.
- In the case of Log-Brunn-Minkowski conjecture, the invariance under $f \rightarrow f + t \langle x, n_x \rangle$ corresponds to the invariance of the global version under $L \rightarrow tL$, while the invariance under $f \rightarrow sf$ corresponds to "time change".

Example: $K = B_\infty^n$

- The inequality

$$n(n-1)V_2(K, M) + \int_{\partial K} \frac{h_M^2}{\langle x, n_x \rangle} dH_{n-1}(x) \leq \frac{n^2 V_1(K, M)^2}{|K|}$$

becomes (using symmetry!)

$$n(n-1)V_2(B_\infty^n, M) + 2 \cdot 2^{n-1} \sum_{i=1}^n h_M^2(e_i) \leq 2^{-4} \cdot 4 \cdot 2^{2n-2} \left(\sum_{i=1}^n h_M(e_i) \right)^2.$$

Example: $K = B_\infty^n$

- The inequality

$$n(n-1)V_2(K, M) + \int_{\partial K} \frac{h_M^2}{\langle x, n_x \rangle} dH_{n-1}(x) \leq \frac{n^2 V_1(K, M)^2}{|K|}$$

becomes (using symmetry!)

$$n(n-1)V_2(B_\infty^n, M) + 2 \cdot 2^{n-1} \sum_{i=1}^n h_M^2(e_i) \leq 2^{-4} \cdot 4 \cdot 2^{2n-2} \left(\sum_{i=1}^n h_M(e_i) \right)^2.$$

- Mixed volumes are monotone, thus $V_2(B_\infty^n, M) \leq V_2(B_\infty^n, B_M)$, where B_M is the parallelepiped with sides $2h_M(e_1), \dots, 2h_M(e_n)$.
- $n(n-1)V_2(B_\infty^n, B_M) = 4 \cdot 2^{n-2} \sum_{i \neq j} h_M(e_i)h_M(e_j)$.



Example: $K = B_\infty^n$

- The inequality

$$n(n-1)V_2(K, M) + \int_{\partial K} \frac{h_M^2}{\langle x, n_x \rangle} dH_{n-1}(x) \leq \frac{n^2 V_1(K, M)^2}{|K|}$$

becomes (using symmetry!)

$$n(n-1)V_2(B_\infty^n, M) + 2 \cdot 2^{n-1} \sum_{i=1}^n h_M^2(e_i) \leq 2^{-4} \cdot 4 \cdot 2^{2n-2} \left(\sum_{i=1}^n h_M(e_i) \right)^2.$$

- Mixed volumes are monotone, thus $V_2(B_\infty^n, M) \leq V_2(B_\infty^n, B_M)$, where B_M is the parallelepiped with sides $2h_M(e_1), \dots, 2h_M(e_n)$.
- $n(n-1)V_2(B_\infty^n, B_M) = 4 \cdot 2^{n-2} \sum_{i \neq j} h_M(e_i)h_M(e_j)$.
- Thus the inequality boils down to an equality

$$\left(\sum_{i=1}^n h_M(e_i) \right)^2 = \left(\sum_{i=1}^n h_M(e_i) \right)^2.$$



Theorem (Kolesnikov, L, 2020+)

The local version of the Log-Brunn-Minkowski conjecture

$$n(n-1)V_2(K, M) + \int_{\partial K} \frac{h_M^2}{\langle x, n_x \rangle} dH_{n-1}(x) \leq \frac{n^2 V_1(K, M)^2}{|K|}$$

is true when $M = [-v, v]$, for any vector $v \in \mathbb{R}^n$.

Theorem (Kolesnikov, L, 2020+)

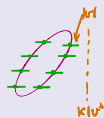
The local version of the Log-Brunn-Minkowski conjecture

$$n(n-1)V_2(K, M) + \int_{\partial K} \frac{h_M^2}{\langle x, n_x \rangle} dH_{n-1}(x) \leq \frac{n^2 V_1(K, M)^2}{|K|}$$

is true when $M = [-v, v]$, for any vector $v \in \mathbb{R}^n$.

Proof

- The function $|K + t[-v, v]| = |K| + 2t|v| \cdot |K|v^\perp|$ is linear in t
- Thus $n(n-1)V_2(K, M) = |K + t[-v, v]|''_{t=0} = 0$



Theorem (Kolesnikov, L, 2020+)

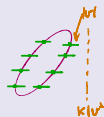
The local version of the Log-Brunn-Minkowski conjecture

$$n(n-1)V_2(K, M) + \int_{\partial K} \frac{h_M^2}{\langle x, n_x \rangle} dH_{n-1}(x) \leq \frac{n^2 V_1(K, M)^2}{|K|}$$

is true when $M = [-v, v]$, for any vector $v \in \mathbb{R}^n$.

Proof

- The function $|K + t[-v, v]| = |K| + 2t|v| \cdot |K|v^\perp$ is linear in t
- Thus $n(n-1)V_2(K, M) = |K + t[-v, v]|''_{t=0} = 0$
- $h_{[-v, v]}(u) = |\langle u, v \rangle|$



Theorem (Kolesnikov, L, 2020+)

The local version of the Log-Brunn-Minkowski conjecture

$$n(n-1)V_2(K, M) + \int_{\partial K} \frac{h_M^2}{\langle x, n_x \rangle} dH_{n-1}(x) \leq \frac{n^2 V_1(K, M)^2}{|K|}$$

is true when $M = [-v, v]$, for any vector $v \in \mathbb{R}^n$.

Proof

- The function $|K + t[-v, v]| = |K| + 2t|v| \cdot |K|v^\perp|$ is linear in t
- Thus $n(n-1)V_2(K, M) = |K + t[-v, v]|''_{t=0} = 0$
- $h_{[-v, v]}(u) = |\langle u, v \rangle|$
- $nV_1(K, [-v, v]) = |K + t[-v, v]|'_{t=0} = 2|K|v^\perp|$ (twice projection)



Theorem (Kolesnikov, L, 2020+)

The local version of the Log-Brunn-Minkowski conjecture

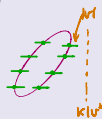
$$n(n-1)V_2(K, M) + \int_{\partial K} \frac{h_M^2}{\langle x, n_x \rangle} dH_{n-1}(x) \leq \frac{n^2 V_1(K, M)^2}{|K|}$$

is true when $M = [-v, v]$, for any vector $v \in \mathbb{R}^n$.

Proof

- The function $|K + t[-v, v]| = |K| + 2t|v| \cdot |K|v^\perp|$ is linear in t
- Thus $n(n-1)V_2(K, M) = |K + t[-v, v]|''_{t=0} = 0$
- $h_{[-v, v]}(u) = |\langle u, v \rangle|$
- $nV_1(K, [-v, v]) = |K + t[-v, v]|'_{t=0} = 2|K|v^\perp|$ (twice projection)
- Thus the statement rewrites

$$\int_{\mathbb{S}^{n-1}} \frac{|\langle u, v \rangle|^2}{h_K(u)} dS_K(u) \leq \frac{4|K|v^\perp|^2}{|K|}.$$



Proof (continued)

- Goal: $\int_{\mathbb{S}^{n-1}} \left(\frac{|\langle u, v \rangle|}{h_K(u)} \right) |\langle u, v \rangle| dS_K(u) \leq \frac{4|K|v^\perp|^2}{|K|}$

Proof (continued)

- Goal: $\int_{\mathbb{S}^{n-1}} \left(\frac{|\langle u, v \rangle|}{h_K(u)} \right) |\langle u, v \rangle| dS_K(u) \leq \frac{4|K|v^\perp|^2}{|K|}$
- By Fubini's theorem, for every $u \in \mathbb{S}^{n-1}$, $|K| = \int_{-h_K(u)}^{h_K(u)} |K \cap (u^\perp + tu)| dt$, and thus

$$\frac{1}{h_K(u)} \leq \frac{2}{|K|} |K \cap u^\perp|.$$



Proof (continued)

- Goal: $\int_{\mathbb{S}^{n-1}} \left(\frac{|\langle u, v \rangle|}{h_K(u)} \right) |\langle u, v \rangle| dS_K(u) \leq \frac{4|K|v^\perp|^2}{|K|}$
- By Fubini's theorem, for every $u \in \mathbb{S}^{n-1}$, $|K| = \int_{-h_K(u)}^{h_K(u)} |K \cap (u^\perp + tu)| dt$, and thus

$$\frac{1}{h_K(u)} \leq \frac{2}{|K|} |K \cap u^\perp|.$$



- Since the projection of a subset is smaller than the projection of a set,

$$\frac{|\langle u, v \rangle|}{h_K(u)} \leq \frac{2}{|K|} |K \cap u^\perp| \cdot |\langle u, v \rangle| = \frac{2}{|K|} |K \cap u^\perp| |v^\perp| \leq \frac{2}{|K|} |K| |v^\perp|.$$

Proof (continued)

- Goal: $\int_{\mathbb{S}^{n-1}} \left(\frac{|\langle u, v \rangle|}{h_K(u)} \right) |\langle u, v \rangle| dS_K(u) \leq \frac{4|K|v^\perp|^2}{|K|}$
- By Fubini's theorem, for every $u \in \mathbb{S}^{n-1}$, $|K| = \int_{-h_K(u)}^{h_K(u)} |K \cap (u^\perp + tu)| dt$, and thus

$$\frac{1}{h_K(u)} \leq \frac{2}{|K|} |K \cap u^\perp|.$$



- Since the projection of a subset is smaller than the projection of a set,

$$\frac{|\langle u, v \rangle|}{h_K(u)} \leq \frac{2}{|K|} |K \cap u^\perp| \cdot |\langle u, v \rangle| = \frac{2}{|K|} |K \cap u^\perp| |v^\perp| \leq \frac{2}{|K|} |K| |v^\perp|.$$

- We conclude

$$\int_{\mathbb{S}^{n-1}} \left(\frac{|\langle u, v \rangle|}{h_K(u)} \right) |\langle u, v \rangle| dS_K(u) \leq \frac{2|K|v^\perp|^2}{|K|} \int_{\mathbb{S}^{n-1}} |\langle u, v \rangle| dS_K = \frac{4|K|v^\perp|^2}{|K|}.$$

(the last passage is the Cauchy's projection formula again.) \square

Question: what if M is a 2-dimensional square?

When $M = [-e_1, e_1] \times [-e_2, e_2]$, the Local Log BM inequality

$$n(n-1)V_2(K, M) + \int_{\partial K} \frac{h_M^2}{\langle x, n_x \rangle} dH_{n-1}(x) \leq \frac{n^2 V_1(K, M)^2}{|K|}$$

becomes

Conjecture: Local Log BM when M is a square

$$8|K| |\text{span}(e_1, e_2)^\perp| + \int_{\mathbb{S}^{n-1}} \frac{(|u_1| + |u_2|)^2}{h_K(u)} dS_K(u) \leq \frac{4(|K|e_1^\perp| + |K|e_2^\perp|)^2}{|K|}.$$

Question: what if M is a 2-dimensional square?

When $M = [-e_1, e_1] \times [-e_2, e_2]$, the Local Log BM inequality

$$n(n-1)V_2(K, M) + \int_{\partial K} \frac{h_M^2}{\langle x, n_x \rangle} dH_{n-1}(x) \leq \frac{n^2 V_1(K, M)^2}{|K|} \quad e_1 \boxed{M} e_2$$

becomes

Conjecture: Local Log BM when M is a square

$$8|K| \text{span}(e_1, e_2)^\perp + \int_{\mathbb{S}^{n-1}} \frac{(|u_1| + |u_2|)^2}{h_K(u)} dS_K(u) \leq \frac{4(|K|e_1^\perp + |K|e_2^\perp)^2}{|K|}.$$

- This does not reduce to the case of one interval: (Example – hexagon on the plane which is close to the square.

Question: what if M is a 2-dimensional square?

When $M = [-e_1, e_1] \times [-e_2, e_2]$, the Local Log BM inequality

$$n(n-1)V_2(K, M) + \int_{\partial K} \frac{h_M^2}{\langle x, n_x \rangle} dH_{n-1}(x) \leq \frac{n^2 V_1(K, M)^2}{|K|}$$



becomes

Conjecture: Local Log BM when M is a square

$$8|K| |\text{span}(e_1, e_2)^\perp| + \int_{\mathbb{S}^{n-1}} \frac{(|u_1| + |u_2|)^2}{h_K(u)} dS_K(u) \leq \frac{4(|K|e_1^\perp| + |K|e_2^\perp|)^2}{|K|}.$$

- This does not reduce to the case of one interval: (Example – hexagon on the plane which is close to the square.

Observation

If the above inequality is true for all K , then the Local Log-Brunn-Minkowski inequality holds whenever

- K is any symmetric convex body and M is a zonoid (limit of a sum of intervals), or
- K is a zonoid and M is any symmetric convex body.

L_p -Minkowski sum (Definition)

$$\lambda K +_p (1 - \lambda)L = \bigcap_{u \in \mathbb{S}^{n-1}} \{x \in \mathbb{R}^n : |\langle u, x \rangle|^p \leq \lambda h_K(u)^p + (1 - \lambda)h_L(u)^p\}.$$

L_p -Brunn-Minkowski conjecture (Böröczky, Lutwak, Yang, Zhang 2011)

For **origin-symmetric convex** sets K and L in \mathbb{R}^n , for $p \in [0, 1]$

$$|\lambda K +_p (1 - \lambda)L| \geq |K|^\lambda |L|^{1-\lambda}.$$

Equivalently, by homogeneity (and/or the earlier story)

$$|\lambda K +_p (1 - \lambda)L|^{\frac{p}{n}} \geq \lambda |K|^{\frac{p}{n}} + (1 - \lambda) |L|^{\frac{p}{n}}.$$

- For $p \in [0, 1]$,

$$\lambda K +_0 (1 - \lambda)L \subset \lambda K +_p (1 - \lambda)L \subset \lambda K + (1 - \lambda)L.$$

- The conjecture interpolates between the Log-Brunn-Minkowski conjecture ($p = 0$) and the Brunn-Minkowski inequality ($p = 1$).

- Kolesnikov-Milman developed the local version of the L_p -Brunn-Minkowski inequality

$$n(n-1)V_2(K, M) + (1-p) \int_{\partial K} \frac{h_M^2}{\langle x, n_x \rangle} dH_{n-1}(x) \leq \frac{n-p}{n} \frac{n^2 V_1(K, M)^2}{|K|}$$

- Kolesnikov-Milman: true for $p \in [1 - cn^{-1.5}, 1]!$
- Chen-Huang-Li-Liu: local implies global (with equality cases)
- Putterman: local implies global (simple and useful proof)
- Conclusion: the L_p -Brunn-Minkowski conjecture

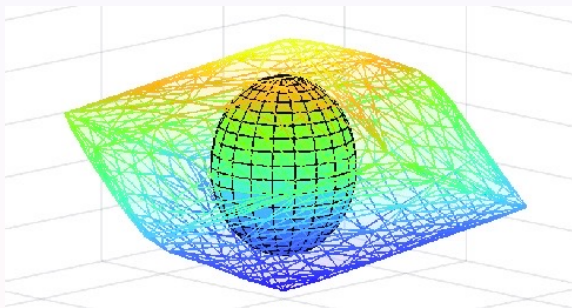
$$|\lambda K +_p (1-\lambda)L|^{\frac{p}{n}} \geq \lambda|K|^{\frac{p}{n}} + (1-\lambda)|L|^{\frac{p}{n}}.$$

is true when $p \in [1 - cn^{-1.5}, 1]!$

Theorem (Hosle, Kolesnikov, L 2020+)

For origin-symmetric convex sets K and L in \mathbb{R}^n such that $K \subset L$, for $p \in [1 - cn^{-0.75}, 1]$

$$|\lambda K +_p (1 - \lambda)L| \geq |K|^\lambda |L|^{1-\lambda}.$$



Remark: note that this is not the dilation-invariant version.

Theorem (Saraglou 2014)

If the L_p -Brunn-Minkowski conjecture holds for some $p \in [0, 1]$, then for any even log-concave measure μ and any pair of origin-symmetric convex sets K and L in \mathbb{R}^n ,

$$\mu(\lambda K +_p (1 - \lambda)L) \geq \mu(K)^\lambda \mu(L)^{1-\lambda}.$$

- Considering the case $p = 0$ and $K = aL$, note that the above **would** imply the B-conjecture of Banaszky-Latala, posed in the 1990s.
- Cordero-Fradelizi-Maurey 2008: true when $K = aL$ and μ is Gaussian.

Theorem (Saraglou 2014)

If the L_p -Brunn-Minkowski conjecture holds for some $p \in [0, 1]$, then for any even log-concave measure μ and any pair of origin-symmetric convex sets K and L in \mathbb{R}^n ,

$$\mu(\lambda K +_p (1 - \lambda)L) \geq \mu(K)^\lambda \mu(L)^{1-\lambda}.$$

- Considering the case $p = 0$ and $K = aL$, note that the above **would** imply the B-conjecture of Banaszchuk-Latała, posed in the 1990s.
- Cordero-Fradelizi-Maurey 2008: true when $K = aL$ and μ is Gaussian.
- In the absence of homogeneity, the inequality no longer improves to an additive version...

Theorem (Saraglou 2014)

If the L_p -Brunn-Minkowski conjecture holds for some $p \in [0, 1]$, then for any even log-concave measure μ and any pair of origin-symmetric convex sets K and L in \mathbb{R}^n ,

$$\mu(\lambda K +_p (1 - \lambda)L) \geq \mu(K)^\lambda \mu(L)^{1-\lambda}.$$

- Considering the case $p = 0$ and $K = aL$, note that the above **would** imply the B-conjecture of Banaszchuk-Latała, posed in the 1990s.
- Cordero-Fradelizi-Maurey 2008: true when $K = aL$ and μ is Gaussian.
- In the absence of homogeneity, the inequality no longer improves to an additive version... Except it does!

L, Marsiglietti, Nayar, Zvavitch 2017

If the Log-Brunn-Minkowski conjecture holds, then for every even log-concave measure μ and any pair of origin-symmetric convex sets K and L in \mathbb{R}^n ,

$$\mu(\lambda K + (1 - \lambda)L)^{\frac{1}{n}} \geq \lambda \mu(K)^{\frac{1}{n}} + (1 - \lambda) \mu(L)^{\frac{1}{n}}.$$

Theorem (Hosle, Kolesnikov, L 2020+)

If the Log-Brunn-Minkowski conjecture holds, then for every even log-concave measure μ and any pair of origin-symmetric convex sets K and L in \mathbb{R}^n ,

$$\mu(\lambda K +_p (1-\lambda)L)^{\frac{p}{n}} \geq \lambda \mu(K)^{\frac{p}{n}} + (1-\lambda) \mu(L)^{\frac{p}{n}}. \quad (3)$$

Moreover, (3) strengthens when p decreases.

Theorem (Hosle, Kolesnikov, L 2020+)

If the Log-Brunn-Minkowski conjecture holds, then for every even log-concave measure μ and any pair of origin-symmetric convex sets K and L in \mathbb{R}^n ,

$$\mu(\lambda K +_p (1-\lambda)L)^{\frac{p}{n}} \geq \lambda \mu(K)^{\frac{p}{n}} + (1-\lambda) \mu(L)^{\frac{p}{n}}. \quad (3)$$

Moreover, (3) strengthens when p decreases.

Conjecture (Gardner, Zvavitch 2007)

For the Gaussian measure μ , and symmetric convex sets K and L ,

$$\mu(\lambda K + (1-\lambda)L)^{\frac{1}{n}} \geq \lambda \mu(K)^{\frac{1}{n}} + (1-\lambda) \mu(L)^{\frac{1}{n}}.$$

- Tkocz-Nayar: the symmetry assumption cannot be replaced by simply origin in the interior.

Theorem (Hosle, Kolesnikov, L 2020+)

If the Log-Brunn-Minkowski conjecture holds, then for every even log-concave measure μ and any pair of origin-symmetric convex sets K and L in \mathbb{R}^n ,

$$\mu(\lambda K +_p (1-\lambda)L)^{\frac{p}{n}} \geq \lambda\mu(K)^{\frac{p}{n}} + (1-\lambda)\mu(L)^{\frac{p}{n}}. \quad (3)$$

Moreover, (3) strengthens when p decreases.

Conjecture (Gardner, Zvavitch 2007)

For the Gaussian measure μ , and symmetric convex sets K and L ,

$$\mu(\lambda K + (1-\lambda)L)^{\frac{1}{n}} \geq \lambda\mu(K)^{\frac{1}{n}} + (1-\lambda)\mu(L)^{\frac{1}{n}}.$$

- Tkocz-Nayar: the symmetry assumption cannot be replaced by simply origin in the interior.

Theorem (Kolesnikov, L 2018)

For the Gaussian measure μ , and convex sets K and L containing the origin,

$$\mu(\lambda K + (1-\lambda)L)^{\frac{1}{2n}} \geq \lambda\mu(K)^{\frac{1}{2n}} + (1-\lambda)\mu(L)^{\frac{1}{2n}}.$$

Theorem (Hosle, Kolesnikov, L 2020+)

Let γ be the Gaussian measure, and let K and L be symmetric convex sets containing the ball rB_2^n . Then for any $\lambda > 0$,

- ① $\gamma(\lambda K +_p (1-\lambda)L) \geq \gamma(K)^\lambda \gamma(L)^{1-\lambda}$, whenever $p \geq 0$ and

$$p \geq 1 - \frac{2r^2}{n+1}.$$

- ② In particular, the Gaussian Log-Brunn-Minkowski inequality holds for all convex sets K and L containing $\sqrt{0.5(n+1)}B_2^n$.
- ③ More generally, $\gamma(\lambda K +_p (1-\lambda)L)^{\frac{q}{n}} \geq \lambda \gamma(K)^{\frac{q}{n}} + (1-\lambda)\gamma(L)^{\frac{q}{n}}$, provided that

$$4q + \frac{n+1}{r^2}(1-p) \leq 2.$$

- ④ Assuming further that $K \subset L$, we show that $\gamma(\lambda K +_p (1-\lambda)L) \geq \gamma(K)^\lambda \gamma(L)^{1-\lambda}$, whenever $p \geq 0$ and $p \geq 1 - \frac{r}{\sqrt{n+0.25}}$.

- In one of the steps of the proof, we deduced the “local to global” result for general measures, following the approach of Putterman.

Thanks for your attention!

