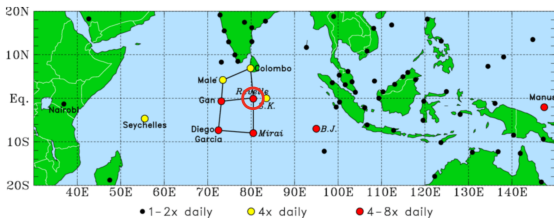


Single-column coupled experiments

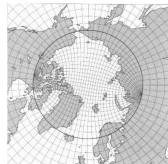
- Cindy/dynamo campaign (MJO suppressed phase; Strong diurnal cycle in temperature)
 - work in progress with J.L. Redelsperger, R. Roehrig, A. Voltaire



- ▷ Joint ocean atmosphere ship-based observations
 - ▷ Simulation tools: Coupled LES ocean-atmosphere model (MesoNH), Single-column version of CNRM-CM
 - ▷ In the same spirit as GEWEX Atmospheric Boundary Layer Study (GABLS) for model intercomparison
-
- Focus on the physics & coupling algorithm & coupling consistency
 - Attempt to define a coupled standardized testcase

Beyond coupled SCMs

- Aqua-planet coupled simulations (?)
 - Does not seem doable with NEMO or MOM6 (tripolar grid)



- 2D $x-z$